



AUSSTELLUNG / EXHIBITION

Zwischen Form und Gefühl

MARTIN ZEMP X HERMITAGE Lake Lucerne

April 10 to June 1, 2025

In Martin Zemp's studio in Lucerne, he creates abstract portraits in acrylic on canvas. The expressive faces impress with skillfully chosen color combinations - sometimes colorful, sometimes reduced in color. Zemp's works cover an area of up to two by two meters. "I can add more power and speed to large paintings. I can only do that if I have enough space," says Zemp.

When he has a new motif in mind, he takes a roll of canvas and starts painting. He only knows how big the picture will be once it is finished. That is, when he cuts the format to size. Nor does he have the finished work in mind at the beginning. Martin Zemp paints intuitively, without any initial sketches. Spending days on a work is not his thing. "The art lies in finding the right moment to stop."

Even as a boy, he constantly picked up pencil and paper and drew people. The fact that his drawings were more than just scribbles back then is a gift that Zemp is grateful for every day. As a young man, he attended arts and crafts school and evening classes to satisfy his hunger for more knowledge about art. His "adult" art is about women, for one thing. "They inspire me, they are strong and gentle at the same time, sensual and graceful."





In summer 2024, Martin Zemp has opened another chapter in his work with his new art collection. While he continues to paint portraits, he is expanding his repertoire to include works that immerse the viewer in a world between form and free brushstrokes. For almost two years now, Zemp has been able to devote himself full-time to his art and uses the freedom he has gained to explore new avenues.

“A clear head is crucial for finding inspiration and developing further,” explains Zemp. The extra time allows him to engage intensively with his surroundings and draw inspiration from them. This creative freedom has laid the foundation for his new art collection, which is characterized by spontaneity and depth.

Zemp creates large-format works that transport the viewer into a world of emotions. His painting moves between concrete forms and free, dynamic brushstrokes. Zemp deliberately leaves room for chance: “I collect impressions from everyday life - sometimes a fleeting glance, a play of light and shadow or the beauty of a blink of an eye is enough. I transform these moments into something completely new on canvas.”

With his reduced but powerful visual language, Zemp succeeds in condensing emotions down to the essentials. His art invites you to pause and discover your own thoughts and feelings. “I don't want to give viewers a rigid framework but rather encourage them to immerse themselves in my works and find something of their own in them,” explains Zemp.

What makes HERMITAGE special for you as an exhibition venue?

It's great to be able to present my works in such an inspiring place, where I also spend time privately. The view of Lake Lucerne reflects the peace and space that my paintings also radiate. I am especially excited to bring my art closer to both local art lovers and international guests, and to spark a creative exchange. I truly appreciate that hotels give art a platform – this connection creates added value for artists, guests, and the property itself.

How do you select works for an exhibition? Is there an overarching theme or a certain atmosphere?

I want to present visitors with a diverse selection of my work that reflects the full range of my artistic expression. At the HERMITAGE, for example, it was particularly important to me to include the "Jazz Player" – a dynamic, expressive piece that fits perfectly with the hotel's atmosphere. At the same time, I wanted to play with a range of color variations and different faces to highlight the diversity of human emotion, features, and character.

Are you guided more by the aesthetic form or your feelings when painting?

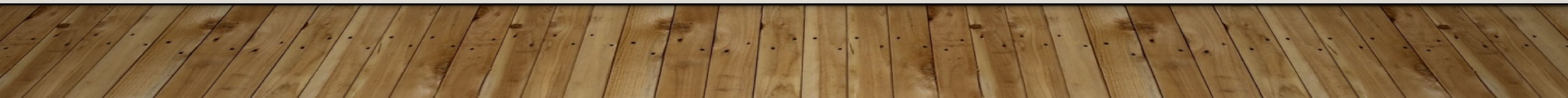
I always have an idea or a face in mind, but the rest happens intuitively. The form develops out of the painting process - I let myself be driven by the moment.

How has your perspective on art evolved over the years?

My perspective on art is constantly evolving – shaped by everything I see, experience, and feel. It's an ongoing process, because sources of inspiration are truly endless.

What would be your dream project if time, budget, and location were no object?

I've reached exactly that point – I can dedicate myself fully to my art and live my dream.





200 X 165 ★ CHF 8700.-
SOLD



155 X 110 ★ CHF 6300.-



200 X 140 ★ CHF 8500.-



195 X 135 ★ CHF 8200.-



200 X 130 ★ CHF 8500.-
SOLD



190 X 190 ★ CHF 9400.-



200 X 115 ★ CHF 8600.-

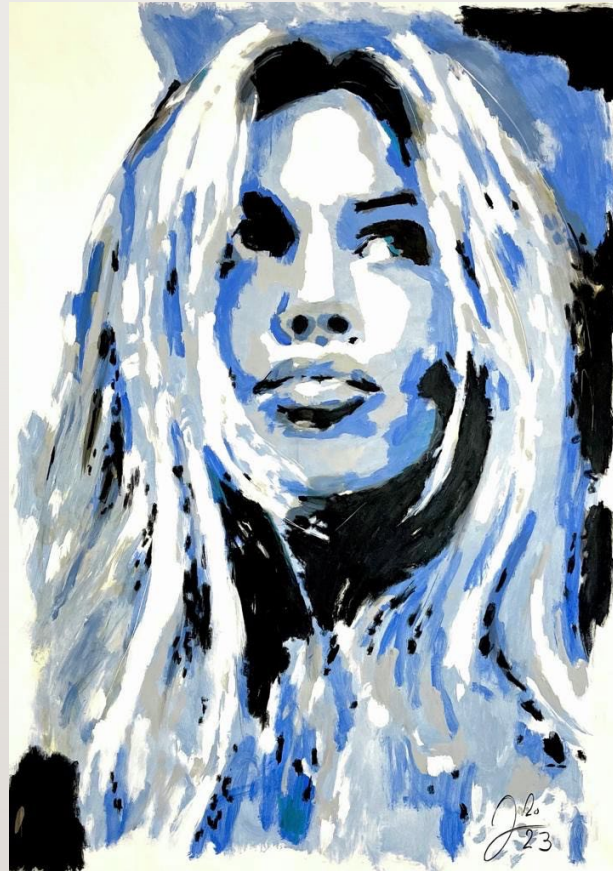


195 X 125 ★ CHF 8800.-





195 X 135 ★ CHF 8200.-



190 X 140 ★ CHF 8400.-



200 X 155 ★ CHF 8600.-

MARTIN ZEMP X HERMITAGE Lake Lucerne

IG: MARTINZEMPART

WWW.MARTINZEMP.CH ★ WWW.ZEMP-ART.COM

ANDREA DECKER, ARTIST AGENT: +41 79 304 48 72